

# HSF

**NOTES:**

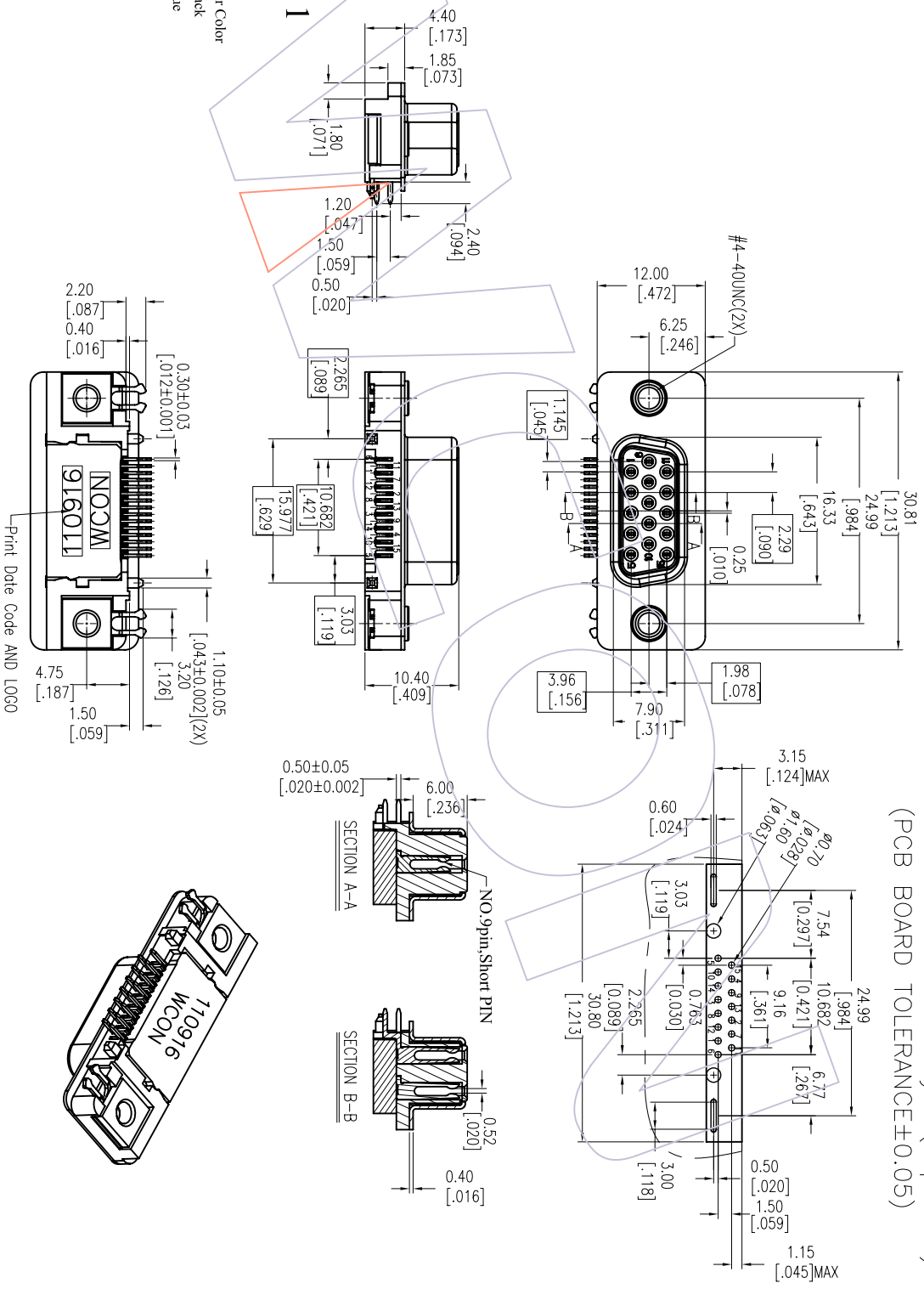
- Current Rating: 3.0AMP
- Contact Resistance: 25mΩ Max
- Withstand Voltage: 500V AC/Minute
- Insulation Resistance: 1000MΩ Min
- Operation Temperature: -55°C to +105°C
- Contact Material: Brass
- Contact plating: Au Or Sn over Ni
- Insulator Material: PA66+30%G.F UL94V-0
- Shell: Cold Roller Steel, Ni Plated
- Revit/Harpoon: Brass, Sn Over Ni Plated

XX XX XX  
Year Month Date

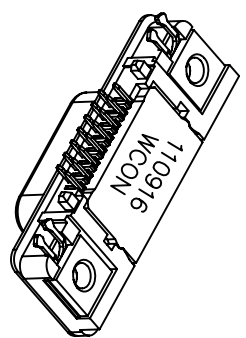
## Ordering Information

6215A-15 F M N XX X 01

- No. of Pins: 15P
- Product Type: M=With Revit Without Screw
- Contact Plating: SP=Gold Flash/Tin S3=10u"Gold/Tin S4=1.5u"Gold/Tin S5=30u"Gold/Tin SN=Tim
- Insulator Color: B:Black U:Blue



Recommended P.C.B Layout(Top Side)  
(PCB BOARD TOLERANCE±0.05)



REV	DATE	MODIFICATION DESCRIPTION	CHANGE	OPERATION	DRAW	DATE	SCALE	FIT	PART NO.	TITLE:	WCON-Dongguan	WCON-Kunshan
A0	2012/12/18	NEW	---	XX	JYHuang	2012/12/18	mm	A4	6215A-15FMMNXXX01	15P FEMALE, 90° DIP, Short 9PIN	Tel: +86 769 85358920	Tel: +86 512 57468408
				XX	CHECK	DATE	SIZE				Fax: +86 769 85358915	Fax: +86 512 57468468
				X.XXX	± 3'	APPROVE	SHEET	1/1	Customer NO.		E-mail: sales@wcon.com	E-mail: sales@wcon.com
				Angle	TOL	DATE	PROJ.					

# WCON

Http: www.wcon.com