

HSF

NOTES:

Current Rating:5.0A AMP
 Contact Resistance:10milliohm Max
 Withstand Voltage:1000V AC/Minute
 Insulation Resistance:1000Megohm Min
 Operation Temperature:-25°C to +85°C

Housing Material:LCP+30%GF(UL94V-0)
 Contact Material:Copper alloy
 Contact plating:Au/Sn over Ni Plating

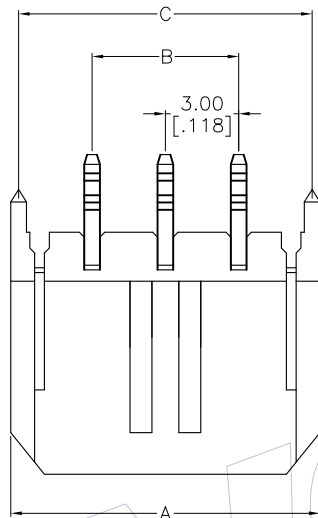
Ordering Information

WF3001-1 WS XX B X 1

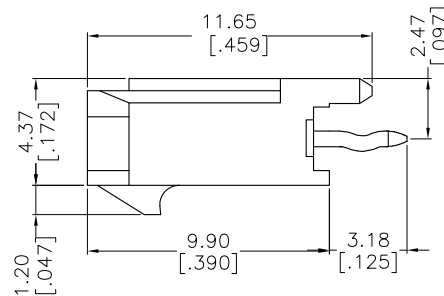
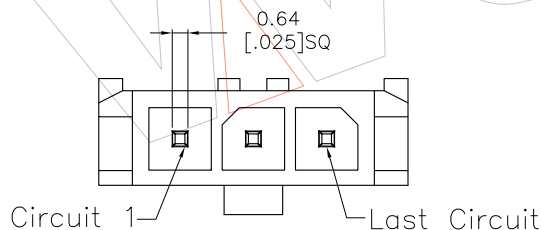
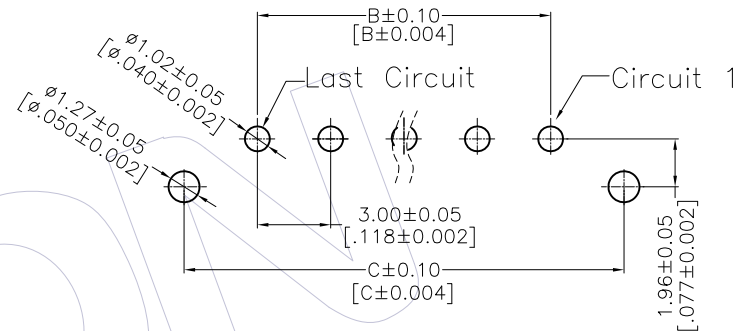
Terminal shape:
WS:Wafer 180° DIP

NO.of Pins
02~12Pin

Packing:
0=PE Bag
T=Tube
A=Tray
R=Tape&Recl



RECOMMENDED PCB LAYOUT
 TOLERANCE IS ±0.05



Circuit	A	B	C
02	9.65[0.380]	3.00[0.118]	9.00[0.355]
03	12.65[0.498]	6.00[0.236]	12.00[0.473]
04	15.65[0.616]	9.00[0.355]	15.00[0.591]
05	18.65[0.735]	12.00[0.473]	18.00[0.709]
06	21.65[0.853]	15.00[0.591]	21.00[0.827]
07	24.65[0.971]	18.00[0.709]	24.00[0.945]
08	27.65[1.089]	21.00[0.827]	27.00[1.063]
09	30.65[1.207]	24.00[0.945]	30.00[1.181]
10	33.65[1.325]	27.00[1.063]	33.00[1.299]
11	36.65[1.443]	30.00[1.181]	36.00[1.418]
12	39.65[1.561]	33.00[1.299]	39.00[1.536]

				OPERATION		DRAW		DATE		SCALE		PART NO.		
				X.X	±0.40	FZY		2012.05.02		1:1		△ WF3001-1WSXXBX1		
				X.XX	±0.25	CHECK		DATE		mm		TITLE:		
				X.XXX	±0.15					inch		3.0 Wafer Single Row		
				Angle	± 3'	APPROVE		DATE		SHEET		180° DIP With Post		
				DIM	TOL					1/1		Customer NO.		
REV	DATE	MODIFICATION DESCRIPTION		CHANGE							PROJ.			

WCON
 Http: www.wcon.com

WCON-Dongguan
 Tel: +86 769 85358920
 Fax: +86 769 85358915
 E-mail: sales@wcon.com

WCON-Kunshan
 Tel: +86 512 57468408
 Fax: +86 512 57468468
 E-mail: sales@wcon.com