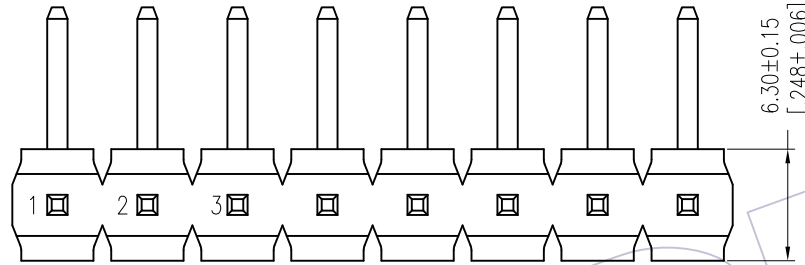
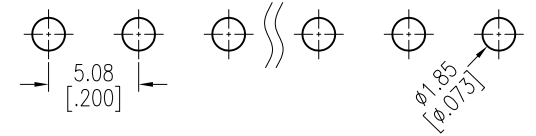


HSF

Recommended P.C.B Layout (Top Side)
(PCB BOARD TOLERANCE±0.05)

NOTES:
Rated Current:7.0AMP.
Contact Resistance:20mΩ Max.
Withstand Voltage:1000V AC/DC
Insulation Resistance:1000MΩ Min.
Operation Temperature:-40°C to +105°C

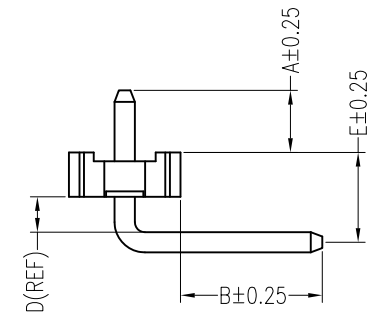
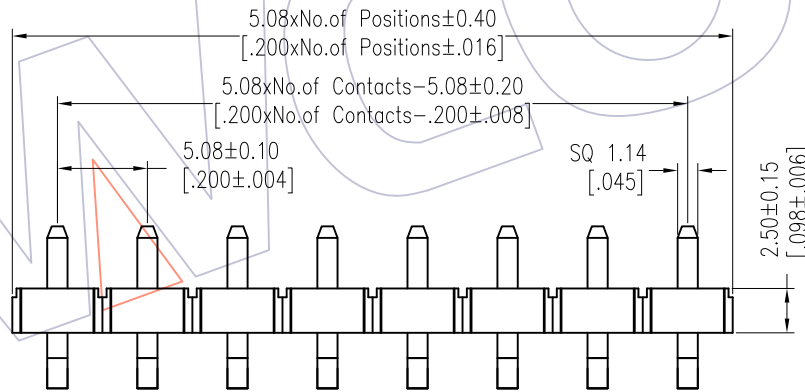
Contact Material:Brass
Contact Plating:Au or Sn Over Ni
Insulator Material:LCP+30%G.F UL94V-0 BK



Ordering Information

1925-11 XX XX R XXX D 0 XX

No.of Pins	Contact Plating	Pin Length	Insulator	Packing	Series No.
01~20	G0=Gold Flash SN=Tin SM=Matte Tin	L=A+B+D+5.5 Std:190=19.0	D=LCP	0=PE Bag	01~99



Item	Pin Length	A	B	E	Mating
Standard	19.0	3.50	8.00	5.07	2989
Alternate					

REV	DATE	MODIFICATION DESCRIPTION	CHANGE	OPERATION	DRAW	DATE	SCALE	Fit	PART NO.
				x.X ±0.40	William Chen	2018/01/26	UNIT	mm [inch]	1925-11XXXXRXXDXXX Δ
A1	2018/01/26	MODIFY PART NO.	-----	x.XX ±0.25	CHECK	DATE	SIZE	A4	TITLE: 5.08 Pin Header, SINGLE ROW, R/A, PLANE BENDING, H=2.5
A0	2012/07/03	NEW	-----	x.XXX ±0.15	APPROVE	DATE	SHEET	1/1	Customer NO.
				Angle ± 3'			PROJ.	ϕ \leftarrow	
				DIM TOL					

WCON

Http: www.wcon.com

WCON-Dongguan Tel: +86 769 85358920 Fax: +86 769 85358915 E-mail: sales@wcon.com	WCON-Kunshan Tel: +86 512 57468408 Fax: +86 512 57468468 E-mail: salesks@wcon.com
---	--